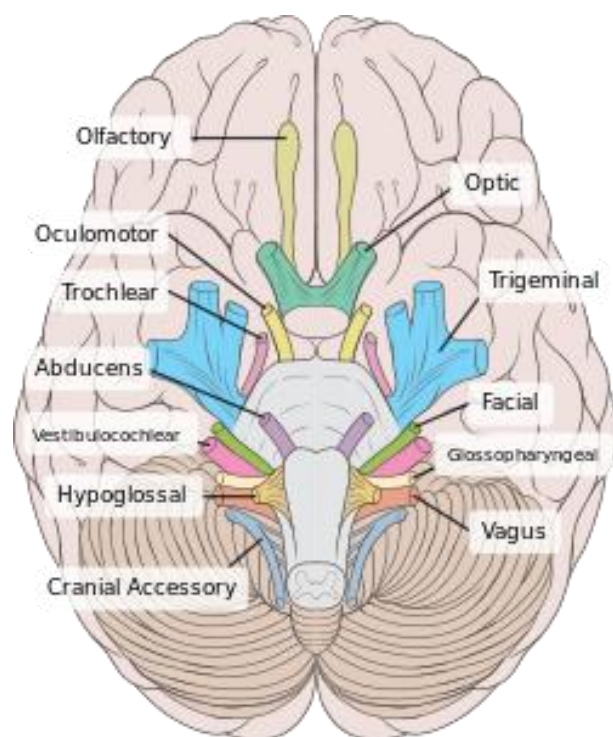
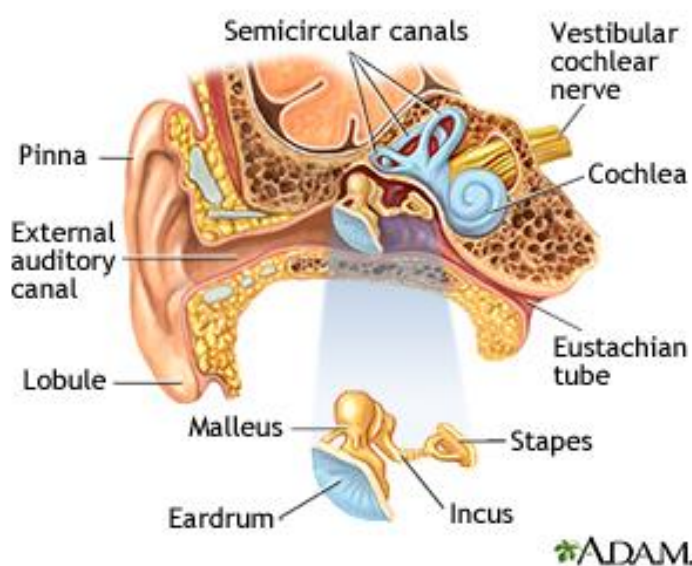


Kliniske tegn ved vanlige årsaker til svimmelhet

Runge and Greganti (2003, p. 729)

| Kliniske tegn | Vestibulær Neuritis | Labyrinthitis | Meniere's sykdom | Perilymph fistula | BPPV | Acoustic neuromas | Kronisk otitis media |
|-----------------------------|----------------------|----------------------|----------------------|-----------------------------------|--------------------|----------------------|----------------------|
| Svimmelhetens varighet | Dager | Dager | Timer | Variabel, forverres gjennom dagen | Sekunder | Ubalanse | Variabel |
| Kvalme/oppkast | Ja | Ja | Ja | Nei | Ja | Nei | Nei |
| Hørselstap | No | SNHL | SNHL, varierende | Mild SNHL | Nei | SNHL, ensidig økende | Kronisk hørselstap |
| Symptomfri intervaller | Nei | Nei | Ja | Lettende ved hvile | Ja | Nei | Nei |
| Tinnitus | Nei | Nei | Ja | Variabel | Nei | Ja | Variabel |
| Assosierte funn | | | Aural tetthet | Barotraume, øre kirugi | Posisjons relatert | | Otorrhea |
| Klinisk rettet undersøkelse | Electronys-tagmogram | Electronys-tagmogram | Electrocochleography | Pneumatic otoscopy | Dix-hallpike | MRI/CT | CT |



Referanser:

1. Runge, M.S. and Greganti, M.A (2003). *Netter's Internal Medicine*. USA: Banta Book Group.
2. https://www.google.no/url?sa=i&rct=j&q=&esrc=s&source=images&cd=&cad=rja&uact=8&ved=0ahUKEwjltmKi8HLAhXCKJoKHb7FCssQjRwIBw&url=https%3A%2F%2Fen.wikipedia.org%2Fwiki%2FVestibulocochlear_nerve&bvm=bv.116636494,d.bGs&psig=AFQjCNEalgFJeDHT7-JY1jRzf70DUhl-hQ&ust=1458075623542317
3. <http://www.allinahealth.org/mdex/en2990985.jpg>